



OUT THERE

INTERNATIONAL FESTIVAL OF OUTDOOR ARTS & CIRCUS



**ACCESSIBLE OUT THERE
PROGRAMME**



OUR PLEDGE

Out There Arts are committed to ensuring the festival is an inclusive, safe and accessible space for everyone. We are deploying a variety of initiatives in place to remove barriers to attendance and greater engagement. We work with all our artists and teams to make each part of the festival experience accessible.



SITE ACCESSIBILITY

Each site/pitch will be wheelchair accessible. Where appropriate ramps will be provided to ensure level access.

Out There Festival welcomes assistance dogs. Drinking bowls are available from the bar tent east of St George's Park.

There will be a range of seating provided including benches and chairs and additional seating available to borrow.



There will be several marquees offering covered space around the festival site. You are also welcome to take shelter in the Festival Lounge.

RELAXED PROGRAMME

Selected shows will have Relaxed Performances from 12pm-2pm before the rest of the shows start. A relaxed performance is designed to have a less formal, more supportive, atmosphere in order to reduce anxiety levels. Performances will be adapted in a variety of ways, including a more relaxed attitude to noise, in order to ensure a safe, enjoyable festival visit.



Relaxed performances will include a 10 minute relaxed opening and a 5 minute Q&A with the artists at the end.



AUDIO DESCRIPTION

AD)))

Select shows will have Audio Description which narrates the visual elements of a show for visually impaired members of the audience. You can pick up the audio description kit from the Access Hub.



QUIET SPACE



Quiet spaces will be available throughout the weekend where you can escape the hubbub of the festival. There will be sensory aids and ear defenders provided. They are marked on the map.

TOUCH TOURS



Touch Tours are for you to familiarise yourself with the festival area, props and sounds used in the experience. It is also an opportunity to meet the cast and ask any questions you may have that would help when watching the show later on. They have been designed so that you can have a Touch Tour in the morning and then watch the show in the afternoon.

Touch Tours are designed for visually impaired people and people with Special Educational Needs, however, if you think you would benefit from attending please feel free. Families with an access user in the group are all welcome to join the tour.

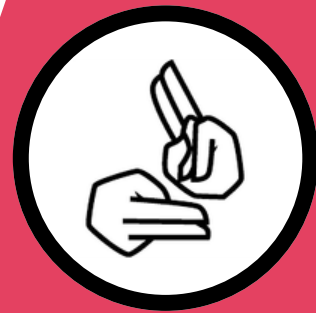


**Book
here!**

LIVE CAPTIONING

Select shows will be live captioned using a difference engine. A Difference Engine is discrete tool for making performances and events accessible to D/deaf or hard-of-hearing by delivering captions direct to their own mobile devices.

BRITISH SIGN LANGUAGE

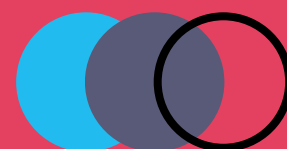


Selected performances of shows with heavy dialogue will be British Sign Language Interpreted. The place the interpreter will stand during the performance will be marked as 'BSL Zone'.

ACCESS HUB

The Access Hub will be your port of call for any access needs. There will be members of staff and volunteers in pink t-shirts here to answer any questions. There will be resources here such as the Easy Read Guide, Sensory Guide and Visual Guide.

You can pick up any equipment you may need such as ear defenders or headphones for audio description. Our Access Buddies are there to ensure you are comfortable at the festival. This might include escorting you to a particular show or just having a chat. The Access Hub is in the park, marked on the map.



VISUAL VS DIALOGUE

The programme contains a variety of shows, some with heavy dialogue and some entirely visual.

We want to ensure this is communicated to the audience so that you can choose what is best for you. For example, an entirely visual show, containing no dialogue, would not have a BSL interpreter but would be good for d/Deaf people.



The visuals are important to the show.



The dialogue is important to the show.



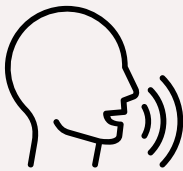
KEY:



The show is audio described.



The visuals are important to the show.



The dialogue is important to the show.



The show is British Sign Language Interpreted.



The show will have a Touch Tour.



The show will have Relaxed Performance.



This is a walkabout show.

15 FEET 6 PRIMUS



CIRCUS

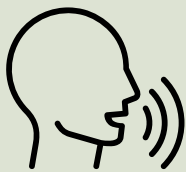


Fri 3.40pm

55 mins

Pitch 2

(inc. 15 min pre-show)



BROKEN SPOKE

SPOKEN WORD
POETRY



Sat 7.30pm

60 mins

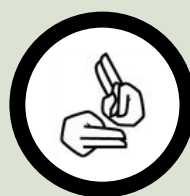
Pitch 4



COCOLOCO MAFIA WEDDING



THEATRE
WALKABOUT



Fri 4.10pm

45 mins

Pitch WT



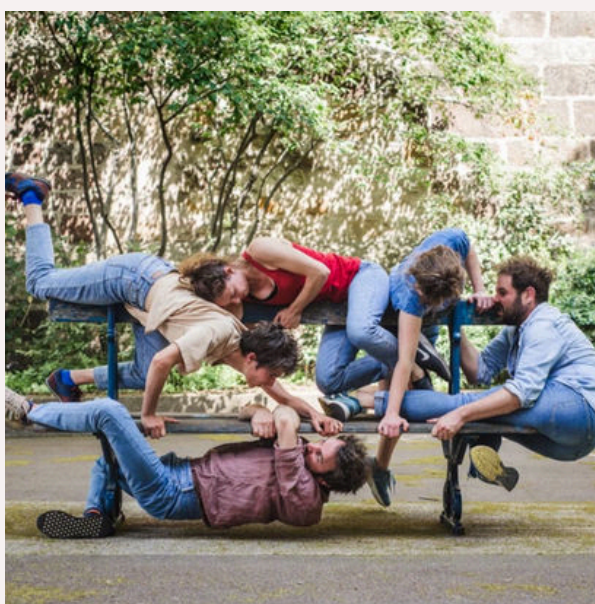
CIRCUS
ACROBATICS



Fri 3:40pm

40 mins

Pitch 8



COLLECTIF BIM PLACE ASSISE

DIZZY O'DARE KEVIN TICKLES DOGS



COMEDY



Sat 1pm



Sat 6.40pm



Sat 1pm

40 mins
(inc. 10 mins pre-show)
Pitch 11

DULCE DUCA UNSTOPPABLE

CIRCUS



Sat 3.25pm

30 mins
Pitch 15



Sat 6.10pm

30 mins
Pitch 15



DUO KAOS TIME TO LOOP



ACROBATICS



Fri 4.30pm

25 mins

Pitch 2

ERIC TARANTOLA THE IMAGINARY ORCHESTRA

MUSIC



Sat 12pm

40 mins

Pitch 15



GORILLA CIRCUS RPM



DANCE



Sat 7.15pm

45 mins
Pitch 7



Sat 12pm

30 mins
Pitch 7

GRACE BILLINGS A DAY AT THE BEACH

CIRCUS



Fri 2pm

40 mins
Pitch 13



Fri 12pm

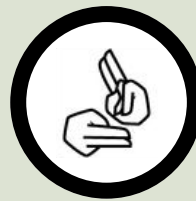
50 mins
Pitch 13



HOCUS POCUS UNSOLICITED ADVICE BUREAU



STREET THEATRE



Sat 2pm
30 mins
Pitch 12



COMEDY
PROMENADE

JONES AND BARNARD GOLDEN TOURS



Fri 6.15pm
40 mins
Pitch WS



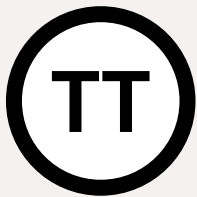


Fri 2pm
1 hr 20 mins
Pitch 1



Sat 5.40pm
60mins
Pitch 1

THE INSECT CIRCUS THE FINAL GRAND FINALE



Sat 12.45pm
30mins
Pitch 1



Sat 2pm
60mins
Pitch 1



LOSERS ARCADE

INTERACTIVE INSTALLATION



Fri 12.45pm

30mins
Pitch 12



Fri 3pm

45 mins
Pitch 12



Sat 1.30pm

1hr
Pitch 12

The Losers Arcade is an interactive drop in installation. It is running 2pm-4pm and 5pm-7pm Fri & Sat.

However, there will be BSL interpreters there during the times illustrated here.

There will also be QR codes as part of the installation that will link to videos of instructions for the game in BSL.

MATT PANG AND OWEN REYNOLDS THOSE IN GLASS HOUSES



CIRCUS



Sat 4:35pm

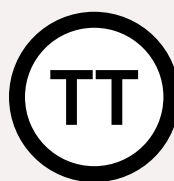
50mins

Pitch 6



PAKA THE UNCREDIBLE BAG OF SNAKES

INTERACTIVE
INSTALLATION



Fri 12pm

30mins

Pitch 12

There will also be QR codes as part of the installation that will link to videos of instructions in BSL.



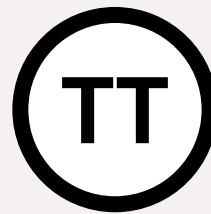
**TICKETED
SHOW
BOOK NOW!**



Content Warnings:
Nudity, Smoking, Loud
Bangs, Flashing Lights,
Smoke, Haze

Age: 16+

MARISA CARNESKY PRODUCTIONS SHOWWOMEN



Fri 6pm
30 mins
Pitch 14



Fri 7pm
(Doors 6:30pm)
60 mins
Pitch 14



Fri 7pm
(Doors 6:30pm)
60 mins
Pitch 14

MUSIC

RIMSKI AND HANDKERCHIEF AN AFTERNOON OUT



Sat 1.30pm

30 mins

Pitch 9



Sat 5.45pm

50 mins

Pitch 9



Sat 5.45pm

50 mins

Pitch 9



CIE. TETES DE MULES PARASITE CIRCUS



THEATRE
COMEDY



Fri 1.30pm

30 mins

Pitch 3



Fri 5.05pm

50 mins

Pitch 3



SIMPLE CYPHER ROLL PLAY

CIRCUS



Fri 1pm

45 mins

Pitch 10



Fri 7.25pm

30 mins

Pitch 10



TEATRO BISLACCO TOTEM TANGO



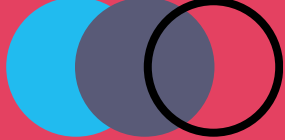
CIRCUS



Sat 2.55pm

35 mins

Pitch 13



AUDIO DESCRIPTION DIARY

Friday 31st May.

TIME	ARTIST	SHOW	DURATION	PITCH
2.45pm	The Miraculous Theatre Company	Razor Sharp	35	4
3.40pm	15Feet6	Primus	55	2
3.40pm	Collectif Bim	Place Assise	40	8
4.30pm	Duo Kaos	Time to Loop	25	2
5.05pm	Cie. Tetes de Mules	Parasite Circus	50	3
7pm (Doors 6.30pm)	Marisa Carnesky Productions	Showwomen	60	14
7.25pm	Simple Cypher	Roll Play	30	10





Saturday 1st June

TIME	ARTIST	SHOW	DURATION	PITCH
2pm	The Insect Circus	The Final Grand Finale	60	1
2.55pm	Teatro Bislacco	Totem Tango	35	13
4.35pm	Matt Pang & Owen Reynolds	Those in Glass Houses	50	6
5.45pm	Rimski & Handkerchief	An Afternoon Out	50	9
6.10pm	Dulce Duca	Unstoppable	30	15
6.50pm	Dizzy O'Dare	Kevin Tickles Dogs	40	10
7.15pm	Gorilla Circus	RPM	45	7
8.10pm	Cie. Tetes de Mules	Parasite Circus	50	3





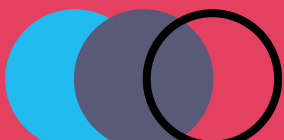
TOUCH TOUR DIARY

Friday 31st May

TIME	ARTIST	SHOW	DURATION	PITCH
12pm	Paka the Uncredible	The Bag of Snakes	30	12
12.45pm	Losers Arcade	The Losers Arcade	30	12
1.30pm	Cie. Tetes de Mules	Parasite Circus	30	3
6pm	Marisa Carnesky Productions	Showwomen	30	14

Saturday 1st June

TIME	ARTIST	SHOW	DURATION	PITCH
12pm	Gorilla Circus	RPM	30	7
12.45pm	The Insect Circus	The Final Grand Finale	30	1
1.30pm	Rimski & Handkerchief	An Afternoon Out	30	9





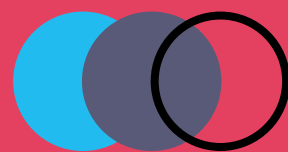
BSL DIARY

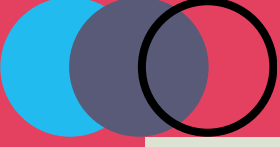
Thursday 30th May.

TIME	ARTIST	SHOW	DURATION	PITCH
4.30pm	Festival Launch		45	FL
7pm (Doors 6:30pm)	Marisa Carnseky Productions	Showwomen	60 + 30 (Q&A)	14

Friday 31st May.

TIME	ARTIST	SHOW	DURATION	PITCH
12pm (Relaxed Performance)	Grace Billings	A Day at the Beach	40	13
2pm	The Insect Circus	The Final Grand Finale	1hr 20	1
2pm	Grace Billings	A Day at the Beach	40	13
3pm	The Losers Arcade		45	12
4pm	Hocus Pocus Theatre	Unsolicited Advice Bureau	30	12
4.10pm	cocoloco	Mafia Wedding	45	WT






TIME	ARTIST	SHOW	DURATION	PITCH
6.15pm	Jones & Barnard	Golden Tours	45	WS
7pm (Doors 6:30pm)	Marisa Carnesky Productions	Showwomen	60	14

Saturday 1st June

TIME	ARTIST	SHOW	DURATION	PITCH
1pm (Relaxed Performance)	Dizzy O'Dare	Kevin Tickles Dogs	40	11
2pm	Hocus Pocus Theatre	Unsolicited Advice Bureau	30	12
1.30pm	The Losers Arcade		60	12
3.25pm	Dulce Duca	Unstoppable	30	15
4.15pm	Dizzy O'Dare	Kevin Tickles Dogs	40	11
5.40pm	The Insect Circus	The Final Grande Finale	60	1
5.45pm	Rimski & Handkerchief	An Afternoon Out	50	9
7.30pm	Broken Spoke Collective	Broken Spoke	60	4





RELAXED PERFORMANCES DIARY

Friday 31st May

TIME	ARTIST	SHOW	DURATION	PITCH
12pm	Grace Billings	A Day at the Beach	50	13
1pm	Simple Cypher	Roll Play	45	10

Saturday 1st June

TIME	ARTIST	SHOW	DURATION	PITCH
12pm	Eric Tarantola	The Imaginary Orchestra	50	15
1pm	Dizzy O'Dare	Kevin Tickles Dogs	45	11

